

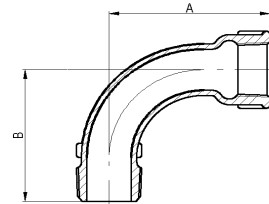


GLOBAL TRADE SOLUTIONS

Malleable Iron fittings - Black or Galvanized
Available in British Standard
Available in DIN Standard
Available in US Standard - Available in JIS Standard

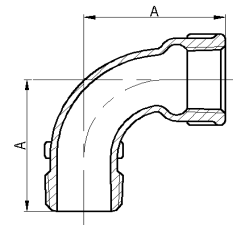


No 1 Bend 90 degrees
BSP threading
Male x Female
Hot dipped galvanized



size	pcs/box
1/8 inch	350
1/4 Inch	300
3/8 inch	150
1/2 inch	100
3/4 inch	60
1 inch	70
1 1/4 inch	30
1 1/2 inch	24
2 inch	15
2 1/2 inch	4
3 inch	4

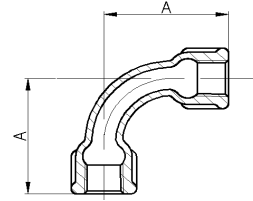
No 1A - Short Bend 90 degrees
BSP threading
Male x Female
Hot dipped galvanized



size	pcs/box
3/8 inch	300
1/2 inch	100
3/4 inch	80
1 inch	60
1 1/4 inch	40
1 1/2 inch	30
2 inch	16
2 1/2 inch	4
3 inch	4
4 inch	2



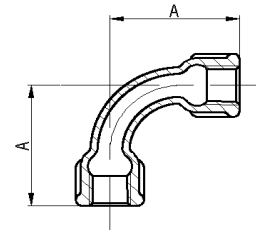
**No 2 Bend 90 degrees
Female x Female
Hot Dipped Galvanized
BSP threading**



size	pcs/box
1/4 inch	250
3/8 inch	150
1/2 inch	80
3/4 inch	60
1 inch	50
1 1/4 inch	24
1 1/2 inch	20
2 inch	10
2 1/2 inch	6
3 inch	4



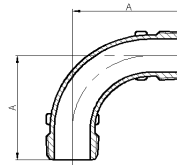
**No 2A Short Bend 90 degrees
Female x Female
Hot Dipped Galvanized
BSP threading**



size	pcs/box
1/2 inch	100
3/4 inch	60
1 inch	60
1 1/4 inch	40
1 1/2 inch	20
2 inch	12
2 1/2 inch	6
3 inch	2
4 inch	1



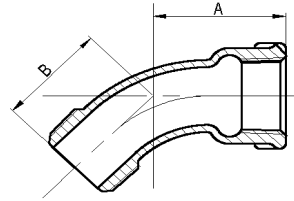
**No 3 Bend 90 degrees
Male x Male
Hot Dipped Galvanized
BSP threading**



size	pcs/box
1/4 inch	300
3/8 inch	150
1/2 inch	80
3/4 inch	60
1 inch	80
1 1/4 inch	40
1 1/2 inch	26
2 inch	12
2 1/2 inch	4
3 inch	4
4 inch	2



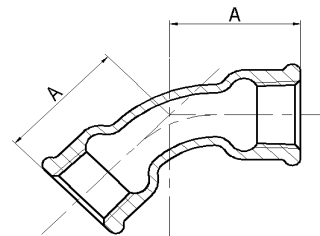
**No 40 Bend 45 degrees
Male x Female
Hot Dipped Galvanized
BSP Threading**



size	pcs/box
1/2 inch	150
3/4 inch	80
1 inch	100
1 1/4 inch	60
1 1/2 inch	40
2 inch	14
2 1/2 inch	8
3 inch	6
4 inch	2
6 inch	1



**No 41 Bend 45 degrees
Female x Female
Hot Dipped Galvanized
BSP Threading**



size	pcs/box
1/4 inch	300
3/8 inch	300
1/2 inch	150
3/4 inch	80
1 inch	80
1 1/4 inch	50
1 1/2 inch	40
2 inch	16
2 1/2 inch	8
3 inch	6
4 inch	2



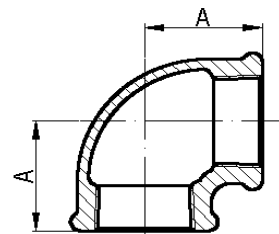
No 85 Crossover

**Hot Dipped Galvanized
BSP Threading**

size	pcs/box
1/2 inch	80
3/4 inch	40
1 inch	40
1 1/4 inch	20
1 1/2 inch	10
2 inch	5



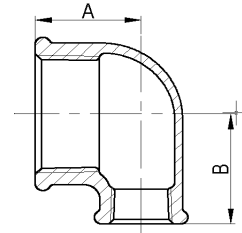
**No 90 Elbow 90 degrees
Female x Female
Hot Dipped Galvanized
BSP Threaded**



size	pcs/box
1/8 inch	300
1/4 inch	300
3/8 inch	300
1/2 inch	170
3/4 inch	90
1 inch	100
1 1/4 inch	70
1 1/2 inch	50
2 inch	25
2 1/2 inch	12
3 inch	10
4 inch	4
5 inch	2
6 inch	1



**No 90R Reducing Elbow 90 degrees
Female x Female
Hot Dipped Galvanized
BSP Threaded**



size	pcs/box
3/8 x 1/4	300
1/2 x 3/8	200
1/2 x 1/4	200
3/4 x 3/8	120
3/4 x 1/2	120
1 x 1/2	120
1 x 3/4	120
1 1/4 x 1/2	90
1 1/4 x 3/4	90
1 1/4 x 1	70
1 1/2 x 1/2	80
1 1/2 x 3/4	70
1 1/2 x 1	60
1 1/2 x 1 1/4	50
2 x 1/2	54
2 x 3/4	50
2 x 1	40
2 x 1 1/4	30
2 x 1 1/2	30
2 1/2 x 1 1/2	16
2 1/2 x 2	16
3 x 1 1/2	12
3 x 2	10
3 x 2 1/2	8
4 x 2 1/2	4
4 x 3	4

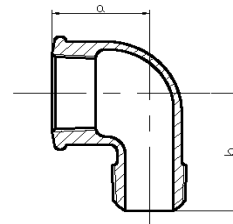


**No 90U Elbow 180 degrees
Female x Female
Hot Dipped Galvanized
BSP Threaded**

size	pcs/box
3/4 inch	40
1 inch	40
1 1/2 inch	18
2 inch	12



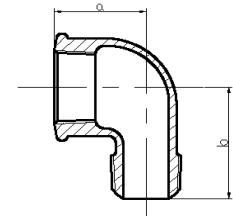
**No 92 Street elbow 90 degrees
Male x Female
Hot dipped galvanized
BSP threading**



size	pcs/box
1/4 inch	320
3/8 inch	260
1/2 inch	160
3/4 inch	100
1 1/4 inch	50
1 1/2 inch	40
2 inch	20
2 1/2 inch	12
3 inch	10
4 inch	4



**No 92 R Street elbow Red.90 degrees
Male x Female
Hot dipped galvanized
BSP threading**



size	pcs/box
1/2 x 3/8	160
3/4 x 1/2	100
1 x 3/4	80
1 1/4 x 1	80
1 1/2 x 1	40
1 1/2 x 1 1/4	40

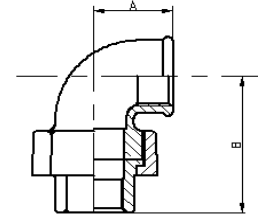


**No 94 elbow 90 degrees
Male x Male
Hot dipped galvanized
BSP threading**

size	pcs/box
3/8 inch	300
1/2 inch	170
3/4 inch	140
1 inch	100
1 1/4 inch	70
1 1/2 inch	40
2 inch	20



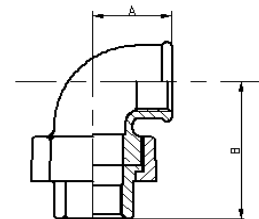
**No 95 Union elbow 90 degrees
Female x Female
Hot dipped galvanized
BSP threading**



size	pcs/box
1/2 inch	60
3/4 inch	40
1 inch	50
1 1/4 inch	24
1 1/2 inch	20
2 inch	12
2 1/2 inch	8
3 inch	4



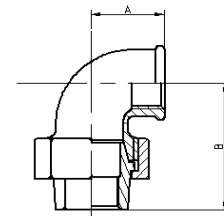
**No G95 Union elbow 90 degrees
with Gasket
Female x Female
Hot dipped galvanized
BSP threading**



size	pcs/box
1/2 inch	60
3/4 inch	40
1 inch	50
1 1/4 inch	24
1 1/2 inch	20
2 inch	12



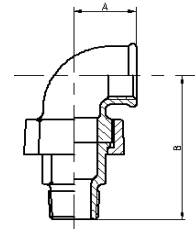
**No 96 Union elbow 90 degrees
Conical
Female x Female
Hot dipped galvanized
BSP threading**



size	pcs/box
3/8 inch	80
1/2 inch	60
3/4 inch	40
1 inch	50
1 1/4 inch	24
1 1/2 inch	20
2 inch	12
2 1/2 inch	50
3 inch	4
4 inch	2



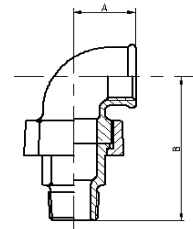
**No 97 Union elbow 90 degrees
Male x Female
Hot dipped galvanized
BSP threading**



size	pcs/box
1/2 inch	50
3/4 inch	30
1 inch	40
1 1/4 inch	20
1 1/2 inch	20
2 inch	10
2 2/12 inch	5
3 inch	4



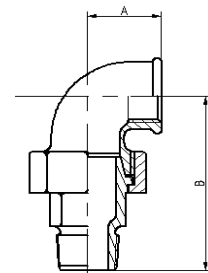
**No G97 Union elbow 90 degrees
with Gasket
Female x Female
Hot dipped galvanized
BSP threading**



size	pcs/box
1/2 inch	50
3/4 inch	30
1 inch	40
1 1/4 inch	20
1 1/2 inch	20
2 inch	10



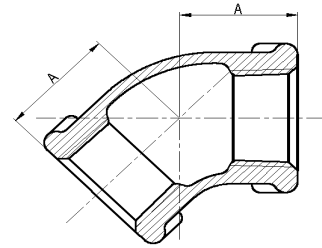
**No 98 Union elbow 90 degrees
Conical
Male x Female
Hot dipped galvanized
BSP threading**



size	pcs/box
1/4 inch	90
3/8 inch	80
1/2 inch	50
3/4 inch	30
1 inch	40
1 1/4 inch	20
1 1/2 inch	20
2 inch	10
2 1/2 inch	5
3 inch	4
4 inch	2



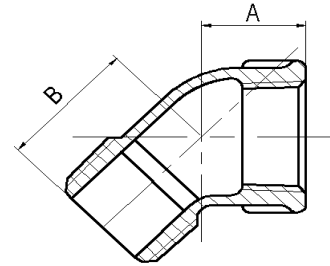
**No 120 Elbows 45 degrees
Female x Female
Hot dipped galvanized
BSP threading**



size	pcs/box
1/2 inch	160
3/4 inch	100
1 inch	100
1 1/4 inch	60
1 1/2 inch	50
2 inch	20
2 1/2 inch	10
3 inch	8
4 inch	4
6 inch	1



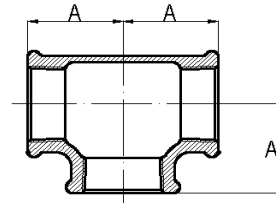
**No 121 Steel Elbows 45 degrees
Male x Female
Hot dipped galvanized
BSP threading**



size	pcs/box
1/2 inch	160
3/4 inch	100
1 inch	120
1 1/4 inch	60
1 1/2 inch	50
2 inch	24
2 1/2 inch	10
3 inch	6



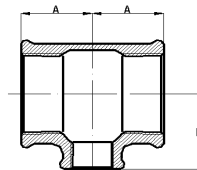
**No 130 Equal Tee
Hot Dipped Galvanized
BSP threaded**



size	pcs/box
1/8 inch	300
1/4 inch	200
3/8 inch	140
1/2 inch	100
3/4 inch	60
1 inch	60
1 1/4 inch	36
1 1/2 inch	24
2 inch	24
2 1/2 inch	8
3 inch	8
4 inch	4
5 inch	2
6 inch	1



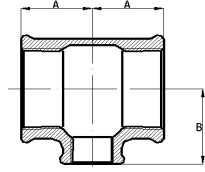
**No 130R Reducing Tee
Hot Dipped Galvanized
BSP threaded**



size	pcs/box
3/8 x 1/4	120
1/2 x 3/8	100
1/2 x 3/8 x 3/8	100
1/2 x 1/2 x 3/8	100
1/2 x 3/4 x 1/2	70
3/4 x 3/8	100
3/4 x 1/2	70
3/4 x 1/2 x 1/2	70
3/4 x 3/4 x 3/8	70
3/4 x 3/4 x 1/2	70
3/4 x 1 x 1/2	80
3/4 x 1 x 3/4	80
3/4 x 1/4	70
1 x 3/8	80
1 x 1/2	60
1 x 1/2 x 1/2	100
1 x 1/2 x 3/4	80
1 x 3/4	60
1 x 3/4 x 1/2	80
1 x 3/4 x 3/4	60
1 x 1 x 3/8	80



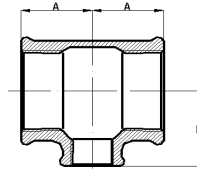
**No 130R Reducing Tee
Hot Dipped Galvanized
BSP threaded**



size	pcs/box
1 x 1 x 1/2	60
1 x 1 x 3/4	60
1 x 1 1/4 x 1	50
1 x 1 1/2 x 1	40
1 x 1/4	80
1 1/4 x 3/8	60
1 1/4 x 1/2	60
1 1/4 x 1/2 x 1	60
1 1/4 x 3/4	50
1 1/4 x 3/4 x 3/4	60
1 1/4 x 3/4 x 1	60
1 1/4 x 1	50
1 1/4 x 1 x 3/4	60
1 1/4 x 1 x 1	50
1 1/4 x 1 1/4 x 1/2	40
1 1/4 x 3/4 x 3/4	40
1 1/4 x 1/1/4 x 1	40
1 1/4 x 1 1/2 x 1 1/4	30
1 1/4 x 2 x 1/1/4	24
1 1/2 x 1/2	40
1 1/2 x 1/2 x 1 1/4	40
1 1/2 x 3/4	40
1 1/2 x 3/4 x 1 1/4	40
1 1/2 x 1	40
1 1/2 x 1 x 1	40
1 1/2 x 1 x 1 1/4	30
1 1/2 x 1 1/4	30
1 1/2 x 1 1/4 x 1	30
1 1/2 x 1 1/4 x 1 1/4	30
1 1/2 x 1 1/2 x 1/2	30
1 1/2 x 1 1/2 x 3/4	30
1 1/2 x 1 1/2 x 1	30
1 1/2 x 1 1/2 x 1 1/4	30
1 1/2 x 2 x 1 1/4	24
1 1/2 x 2 x 1 1/2	20
2 x 1/2	30
2 x 1/2 x 1 1/2	32
2 x 3/4	24
2 x 3/4 x 1 1/2	28
2 x 1	24
2 x 1 x 1 1/2	24
2 x 1 1/4	24
2 x 1 1/4 x 1 1/4	20
2 x 1 1/4 x 1 1/2	20



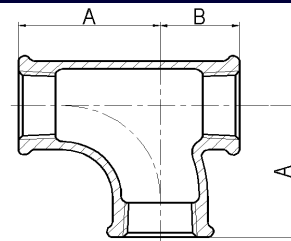
**No 130R Reducing Tee
Hot Dipped Galvanized
BSP threaded**



size	pcs/box
2 x 1 1/2	24
2 x 1 1/2 x 1	24
2 x 1 1/2 x 1 1/2	24
2 x 2 x 1/2	24
2 x 2 x 3/4	24
2 x 2 x 1	24
2 x 2 x 1/2	24
2 1/2 x 1/2	16
2 1/2 x 3/4	16
2 1/2 x 1	16
2 1/2 x 1 1/4	12
2 1/2 x 1 1/2	12
2 1/2 x 2	15
2 1/2 x 2 x 2	15
3 x 1/2	12
3 x 3/4	12
3 x 1	12
3 x 1 1/4	12
3 x 1 1/2	12
3 x 2	12
3 x 2 1/2	8
4 x 1	4
4 x 1 1/4	4
4 x 1 1/2	4
4 x 2	4
4 x 2 1/2	4
4 x 3	4



**No 131 Pitcher Tee Equal
Hot Dipped Galvanized
BSP threaded**



size	pcs/box
1/2 inch	50
3/4 inch	30
1 inch	30
1 1 /4 inch	22
1 1/2 inch	15
2 inch	10



**No 132 Twin Elbow Equal
Hot Dipped Galvanized
BSP threaded**

size	pcs/box
1/2 inch	50
3/4 inch	30
1 inch	30
1 1/4 inch	20
1 1/2 inch	12
2 inch	6



**No 133 Equal Tee
middle branch with Male threads
Hot Dipped Galvanized
BSP threaded**

size	pcs/box
3/8 inch	140
1/2 inch	100
3/4 inch	60
1 inch	60



**No 134 Equal Tee
Hot Dipped Galvanized
BSP threaded**

size	pcs/box
1/2 inch	70
3/4 inch	60
1 inch	60
1 1/4 inch	36
1 1/2 inch	30
2 inch	16

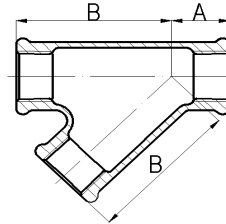


No 135 Equal Tee
male threads
Hot Dipped Galvanized
BSP threaded

size	pcs/box
1/2 inch	100
3/4 inch	60
1 inch	60



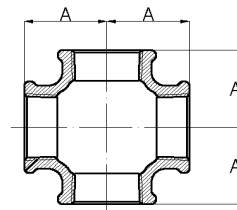
No 165 Lateral Tee
Y-Branches
Hot Dipped Galvanized
BSP threaded



size	pcs/box
1/2 inch	60
3/4 inch	30
1 inch	40
1 1/4 inch	24
1 1/2 inch	16
2 inch	8



No 180 Cross
Hot Dipped Galvanized
BSP threaded



size	pcs/box
1/2 inch	70
3/4 inch	50
1 inch	60
1 1/4 inch	24
1 1/2 inch	24
2 inch	12
2 1/2 inch	7
3 inch	5
4 inch	3

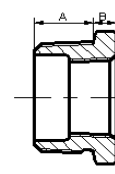
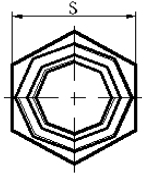
No 180R Reducing Cross
Hot Dipped Galvanized
BSP threaded

size	pcs/box
3/4 x 1/2	50
1 x 1/2	80



**No 241 Bushing
Male x Female**

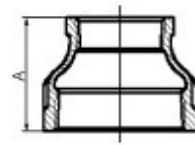
**Hot Dipped galvanized
BSP Threading**



size	pcs/box
1/4 x 1/8	500
3/8 x 1/8	500
3/8 x 1/4	500
1/2 x 1/8	450
1/2 x 1/4	450
1/2 x 3/8	450
3/4 x 3/8	250
3/4 x 1/2	250
1 x 1/2	180
1 x 3/4	180
1 1/4 x 3/8	120
1 1/4 x 1/2	120
1 1/4 x 3/4	140
1 1/4 x 1	180
1 1/2 x 3/8	90
1 1/2 x 1/2	90
1 1/2 x 1	110
1 1/2 x 1 1/4	150
2 x 1/2	60
2 x 3/4	60
2 x 1	56
2 x 1 1/4	60
2 x 1 1/2	60
2 1/2 x 1/2	48
2 1/2 x 3/4	36
2 1/2 x 1	40
2 1/2 x 1 1/4	36
2 1/2 x 1 1/2	36
2 1/2 x 2	48
3 x 1	24
3 x 1 1/4	24
3 x 1 1/2	24
3 x 2	24
3 x 2 1/2	32
4 x 3/4	12
4 x 1	12
4 x 1 1/4	10
4 x 1 1/2	12
4 x 2	12
4 x 2 1/2	12
4 x 3	16
5 x 4	6
6 x 3	6
6 x 4	6



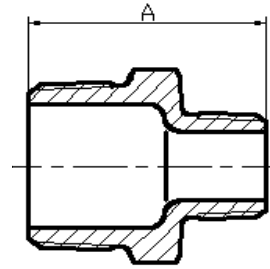
**No 240 Reducing Couplings
Female x Female
Hot dipped Galvanized
BSP threading**



size	pcs/box
3/8 x 1/4	300
1/2 x 3/8	250
3/4 x 1/4	120
3/4 x 3/8	120
3/4 x 1/2	120
1 x 3/8	140
1 x 1/2	140
1 x 3/4	140
1 1/4 x 1/2	120
1 1/4 x 3/4	120
1 1/4 x 1	100
1 1/2 x 1/2	100
1 1/2 x 3/4	90
1 1/2 x 1	90
1 1/2 x 1 1/4	70
2 x 1/2	50
2 x 3/4	50
2 x 1	50
2 x 1 1/4	40
2 x 1 1/2	40
2 1/2 x 1/2	40
2 1/2 x 3/4	40
2 1/2 x 1	40
2 1/2 x 1 1/4	40
2 1/2 x 1 1/2	40
2 1/2 x 2	24
3 x 1	24
3 x 1 1/4	24
3 x 1 1/2	24
3 x 2	28
3 x 2 1/2	20
4 x 1 1/2	12
4 x 2	12
4 x 2 1/2	12
4 x 3	12



**No 245 Reducing Nipple
male x male
Hot dipped Galvanized
BSP threading**

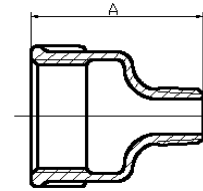


size	pcs/box
1/4 x 1/8	400
3/8 x 1/4	360
1/2 x 3/8	280
3/4 x 1/4	160
3/4 x 3/8	160
3/4 x 1/2	160
1 x 3/4	140
1 1/4 x 1/2	100
1 1/4 x 3/4	100
1 1/4 x 1	70
1 1/2 x 1/2	90
1 1/2 x 3/4	90
1 1/2 x 1	90
1 1/2 x 1 1/4	80
2 x 1/2	50
2 x 3/4	50
2 x 1	50
2 x 1 1/4	50
2 x 1 1/2	50
2 1/2 x 1	30
2 1/2 x 1 1/4	30
2 1/2 x 1 1/2	30
2 1/2 x 2	30
3 x 1 1/2	20
3 x 2	20
3 x 2 1/2	20
4 x 2	10
4 x 2 1/2	10
4 x 3	10



No 246 Extension red. piece

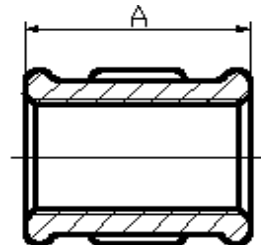
**Hot Dipped Galvanized
BSP threaded**



size	pcs/box
1/2 x 1/4	280
3/4 x 3/8	160
3/4 x 1/2	160
1 x 1/2	160
1 x 3/4	140
1 1/4 x 1/2	100
1 1/4 x 3/4	100
1 1/4 x 1/2	100
1 1/2 x 3/4	80
1 1/2 x 1	80
1 1/2 x 1 1/4	80
2 x 1/2	50
2 x 3/4	50
2 x 1	50
2 x 1 1/4	50
2 x 1 1/2	50
2 1/2 x 1 1/2	30
2 1/2 x 2	30
3 x 2	20
3 x 2 1/2	20



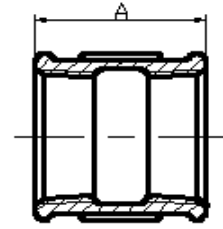
**No 270 Sockets
Female x Female
Hot Dipped Galvanized
BSP threading**



size	pcs/box
1/8 inch	250
1/4 inch	250
3/8 inch	250
1/2 inch	200
3/4 inch	130
1 inch	120
1 1/4 inch	100
1 1/2 inch	70
2 inch	36
2 1/2 inch	20
3 inch	14
4 inch	8
5 inch	4
6 inch	3



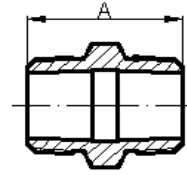
No 271 Sockets
Right & Left
Hot Dipped Galvanized
BSP threading



size	pcs/box
1/2 inch	200
3/4 inch	140
1 inch	120
1 1/4 inch	100
1 1/2 inch	70
2 inch	36



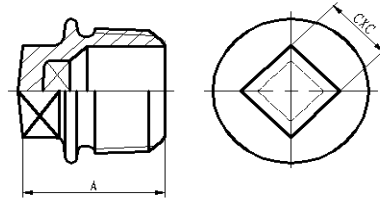
No 280 Nipple
Male x Male
Hot Dipped Galvanized
BSP Threading



size	pcs/box
1/8 inch	550
1/4 inch	400
3/8 inch	360
1/2 inch	250
3/4 inch	160
1 inch	120
1 1/4 inch	100
1 1/2 inch	80
2 inch	50
2 1/2 inch	24
3 inch	16
4 inch	10
5 inch	4
6 inch	4



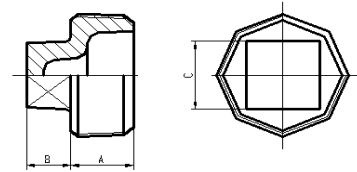
**No 290 Plug
Male
Hot dipped Galvanized
BSP threading**



size	pcs/box
1/8 inch	1000
1/4 inch	1000
3/8 inch	550
1/2 inch	400
3/4 inch	250
1 inch	200
1 1/4 inch	140
1 1/2 inch	100
2 inch	66
2 1/2 inch	36
3 inch	20
4 inch	12



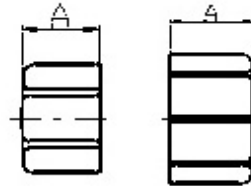
**No 291 Plain Plug
Hot dipped Galvanized
BSP threading**



size	pcs/box
3/8 inch	550
3/4 inch	250
1 1/4 inch	140
1 1/2 inch	100
2 inch	66
2 1/2 inch	36
3 inch	20
4 inch	12



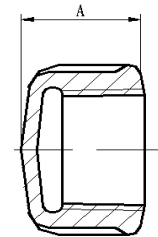
**No 300 Hexagon Cap
BSP Threading
hot dipped Galvanized**



size	pcs/box
1/8 inch	600
1/4 inch	600
3/8 inch	500
1/2 inch	300
3/4 inch	250
1 inch	150
1 1/4 inch	150
1 1/2 inch	130
2 inch	70
2 1/2 inch	40
3 inch	24
4 inch	12



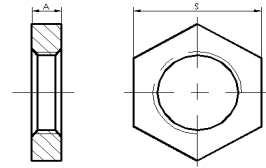
**No 301 Round Cap
BSP Threading
hot dipped Galvanized**



size	pcs/box
1/2 inch	300
3/4 inch	250
1 inch	150
1 1/4 inch	140
1 1/2 inch	120
2 inch	70
2 1/2 inch	40
3 inch	24
4 inch	12



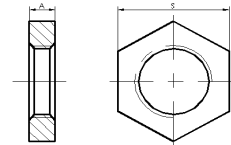
**No 310 Hexagon Nut
BSP Threading
hot dipped Galvanized**



size	pcs/box
1/4 inch	700
3/8 inch	500
1/2 inch	400
3/4 inch	300
1 inch	280
1 1/4 inch	200
1 1/2 inch	180
2 inch	100
2 1/2 inch	50
3 inch	40
4 inch	20



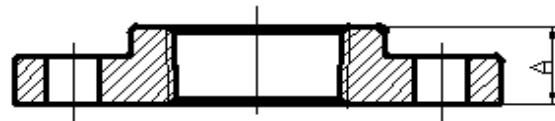
**No 312 Back nut
Hot dipped Galvanized
BSP threaded**



size	pcs/box
3/8 inch	500
1/2 inch	400
3/4 inch	300
1 inch	360
1 1/4 inch	250
1 1/2 inch	200
2 inch	120
2 1/2 inch	60
3 inch	50



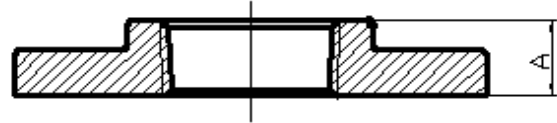
**No 321 Floor flanges W4H
Hot dipped Galvanized
BSP threaded**



size	pcs/box
1/2 inch	80
3/4 inch	60
1 inch	70
1 1/4 inch	50
1 1/2 inch	38
2 inch	24
2 1/2 inch	16
3 inch	10
4 inch	8
6 inch	3



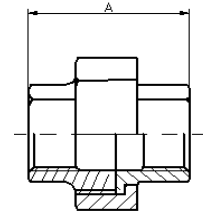
**No 321W Floor flanges
without holes
Hot dipped Galvanized
BSP threaded**



size	pcs/box
3/8 inch	120
1/2 inch	50
3/4 inch	50
1 inch	60
1 1/4 inch	40
1 1/2 inch	32
2 inch	20
2 1/2 inch	16
3 inch	10
4 inch	8
6 inch	3



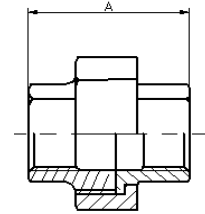
**No 330 Union
Flat Seat
Hot dipped Galvanized
BSP threaded**



size	pcs/box
1/4 inch	140
3/8 inch	120
1/2 inch	80
gaskets 1/2 inch	500
3/4 inch	60
gaskets 3/4 inch	500
1 inch	60
gaskets 1 inch	500
1 1/4 inch	40
gaskets 1 1/4 inch	500
1 1/2 inch	30
gaskets 1 1/2 inch	500
2 inch	20
2 1/2 inch	300
3 inch	8
4 inch	2



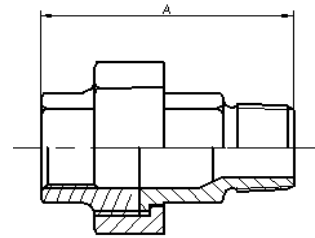
No 330 Union
Flat Seat - with gasket
Hot dipped Galvanized
BSP threaded



size	pcs/box
3/8 inch	120
1/2 inch	80
3/4 inch	60
1 inch	60
1 1/4 inch	40
1 1/2 inch	30
2 inch	20
2 1/2 inch	10
3 inch	8
4 inch	2



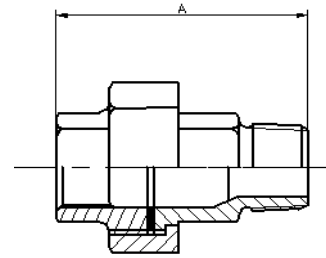
No 331 Union
Flat Seat - Male x Female
Hot dipped Galvanized
BSP threaded



size	pcs/box
1/4 inch	120
3/8 inch	100
1/2 inch	60
3/4 inch	40
1 inch	60
1 1/4 inch	30
1 1/2 inch	24
2 inch	14
2 1/2 inch	6
3 inch	4
4 inch	2



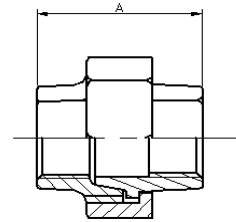
**No 331D Union - with Gasket
Flat Seat - Male x Female
Hot dipped Galvanized
BSP threaded**



size	pcs/box
1/2 inch	60
3/4 inch	40
1 inch	60
1 1/4 inch	30
1 1/2 inch	24
2 inch	14
2 1/2 inch	6
3 inch	4
4 inch	2



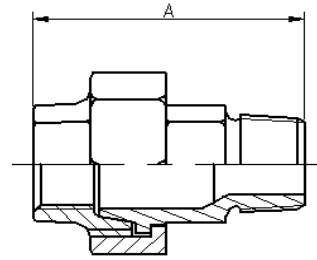
**No 340 Union
Hot dipped Galvanized
BSP threaded
Conical Joint**



size	pcs/box
1/8 inch	200
1/4 inch	140
3/8 inch	120
1/2 inch	80
3/4 inch	60
1 inch	60
1 1/4 inch	40
1 1/2 inch	30
2 inch	20
2 1/2 inch	10
3 inch	8
4 inch	4



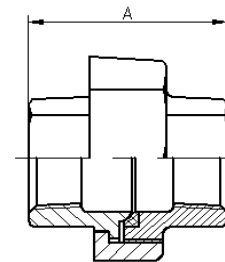
**No 341 Union
Hot dipped Galvanized
BSP threaded
Conical Joint
Male x Female**



size	pcs/box
1/2 inch	60
3/4 inch	40
1 inch	50
1 1/4 inch	30
1 1/2 inch	24
2 inch	14
2 1/2 inch	6
3 inch	4



**No 342 Union
Hot dipped Galvanized
BSP threaded
Conical Joint
Brass to Iron Seat**



size	pcs/box
3/8 inch	120
1/2 inch	80
3/4 inch	60
1 inch	60
1 1/4 inch	40
1 1/2 inch	30
2 inch	20
2 1/2 inch	10
3 inch	8
4 inch	4



**No 344 Union Taper seat
Hot dipped Galvanized
BSP threaded**

size	pcs/box
1/2 inch	60
3/4 inch	40
1 inch	50
1 1/4 inch	30



No 371 Union Tail piece
Hot dipped Galvanized
BSP threaded
341 threads male

size	pcs/box
1 inch	80



No 372 Union Tail piece
Hot dipped Galvanized
BSP threaded
330 Female End

size	pcs/box
1/2 inch	120
3/4 inch	110
1 inch	120



No 374 Union nut
Hot dipped Galvanized
BSP threaded

size	pcs/box
1/2 inch	200
3/4 inch	100
1 inch	80
1 1/4 inch	100
1 1/2 inch	90
2 inch	50

No 529 Extension long piece
Hot dipped Galvanized
BSP threaded

size	pcs/box
3/8 inch	250
1/2 inch	180
3/4 inch	130
1 inch	160
1 1/4 inch	100
1 1/2 inch	70
2 inch	30



No 531 Nipple
Hot dipped Galvanized
BSP threaded

size	pcs/box
3/8 inch	400
1/2 inch	400
3/4 inch	280
1 inch	160
1 1/4 inch	100
1 1/2 inch	100
2 inch	50
2 1/2 inch	24
3 inch	14



No 596
Hot dipped Galvanized
BSP threaded

size	pcs/box
1 inch	200



No 2220 Y-piece
Hot dipped Galvanized
BSP threaded

size	pcs/box
3/8 inch	120
1/2 inch	70
3/4 inch	50
1 inch	20

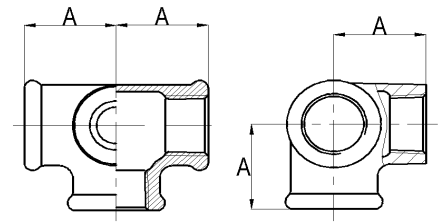


No 1221 Side Outlet elbow
Hot dipped Galvanized
BSP threaded

size	pcs/box
1/2 inch	80
3/4 inch	60
1 inch	80
1 1/4 inch	34
1 1/2 inch	24
2 inch	12



No 1223 Side Outlet Tee
Hot dipped Galvanized
BSP threaded



size	pcs/box
1/2 inch	70
3/4 inch	40
1 inch	40
1 1/4 inch	30